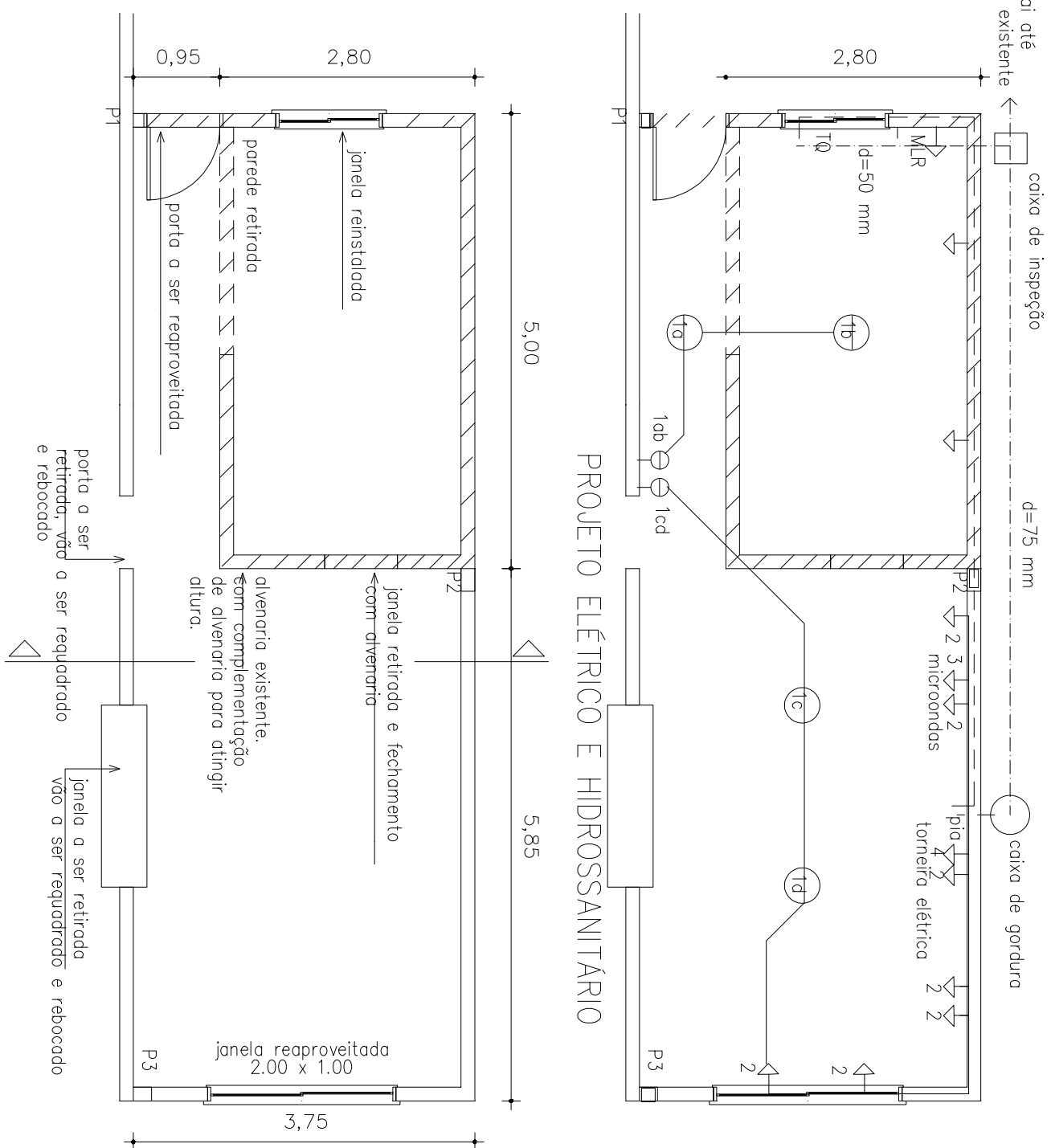
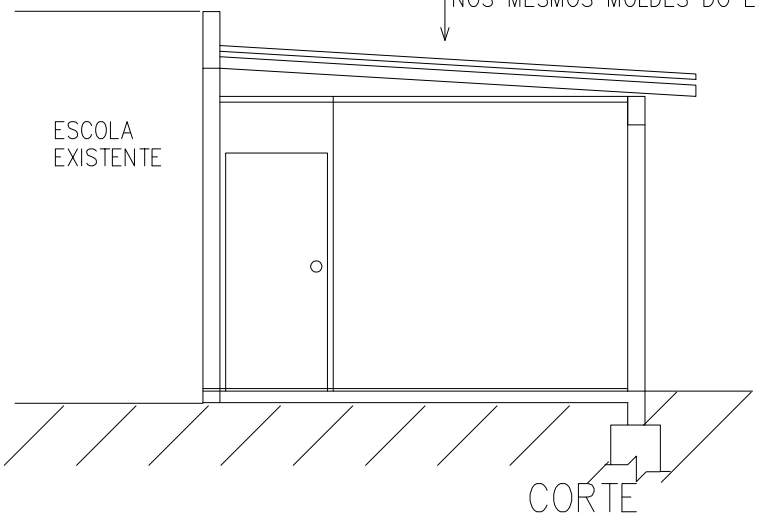
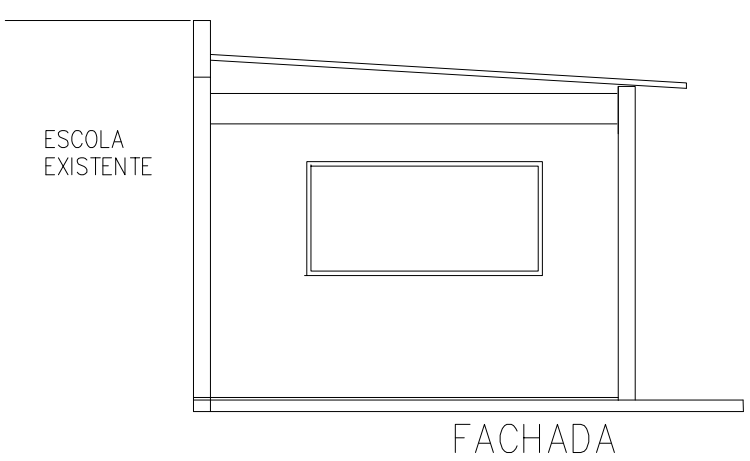


AMPLIAÇÃO DA ESTRUTURA E COBERTURA

NOS MESMOS MOLDES DO EXISTENTE



PLANTA BAIXA
A=40,68 m²



PREFEITURA MUNICIPAL LAGOA 3 CANTOS
REFORMA E AMPLIAÇÃO DA E. DONA LEOPOLDINA – LINHA GLÓRIA

SERGIO ANTONIO LASCH
Prefeito Municipal

ANDREA REJANE KAYSER
Engenheira Civil

PROJETO ARQUITETONICO